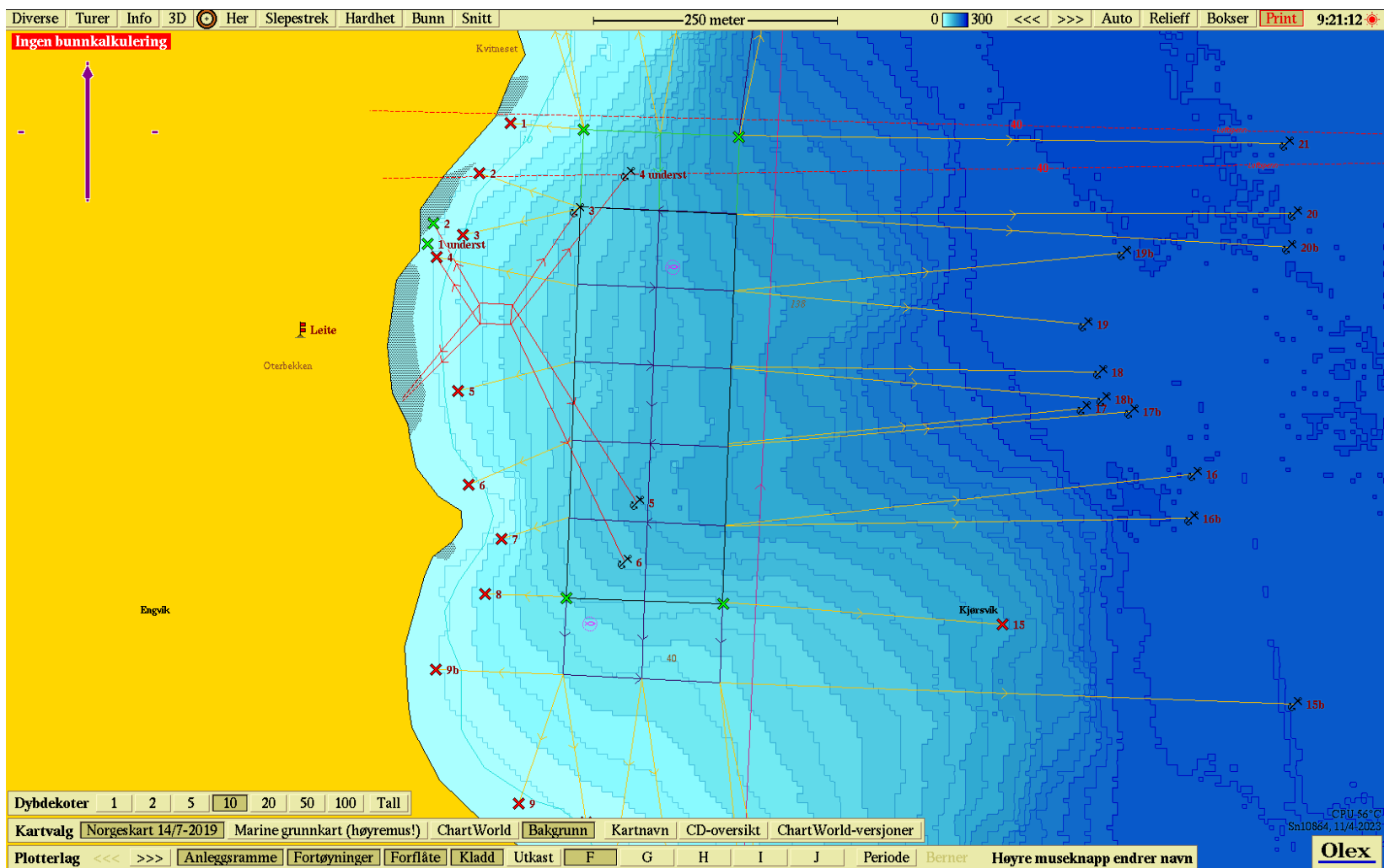
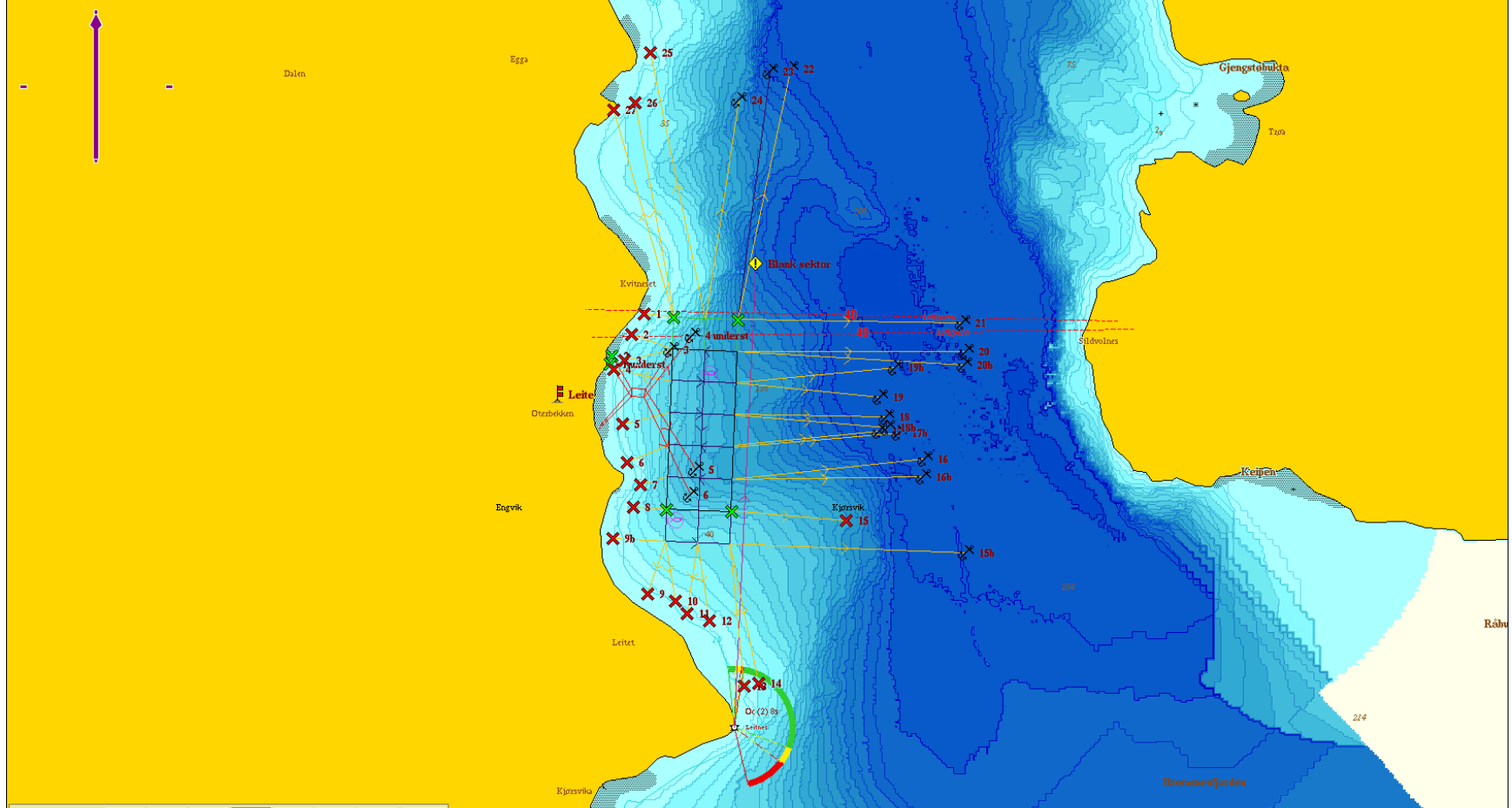


# Anleggsskisse lokalitet Leite

Grønne kryss er hjørneposisjon til nåværende plassering av anlegget.



Ingen bunnkalkulering



Dybdekoter 1 2 5 10 20 50 100 Tall

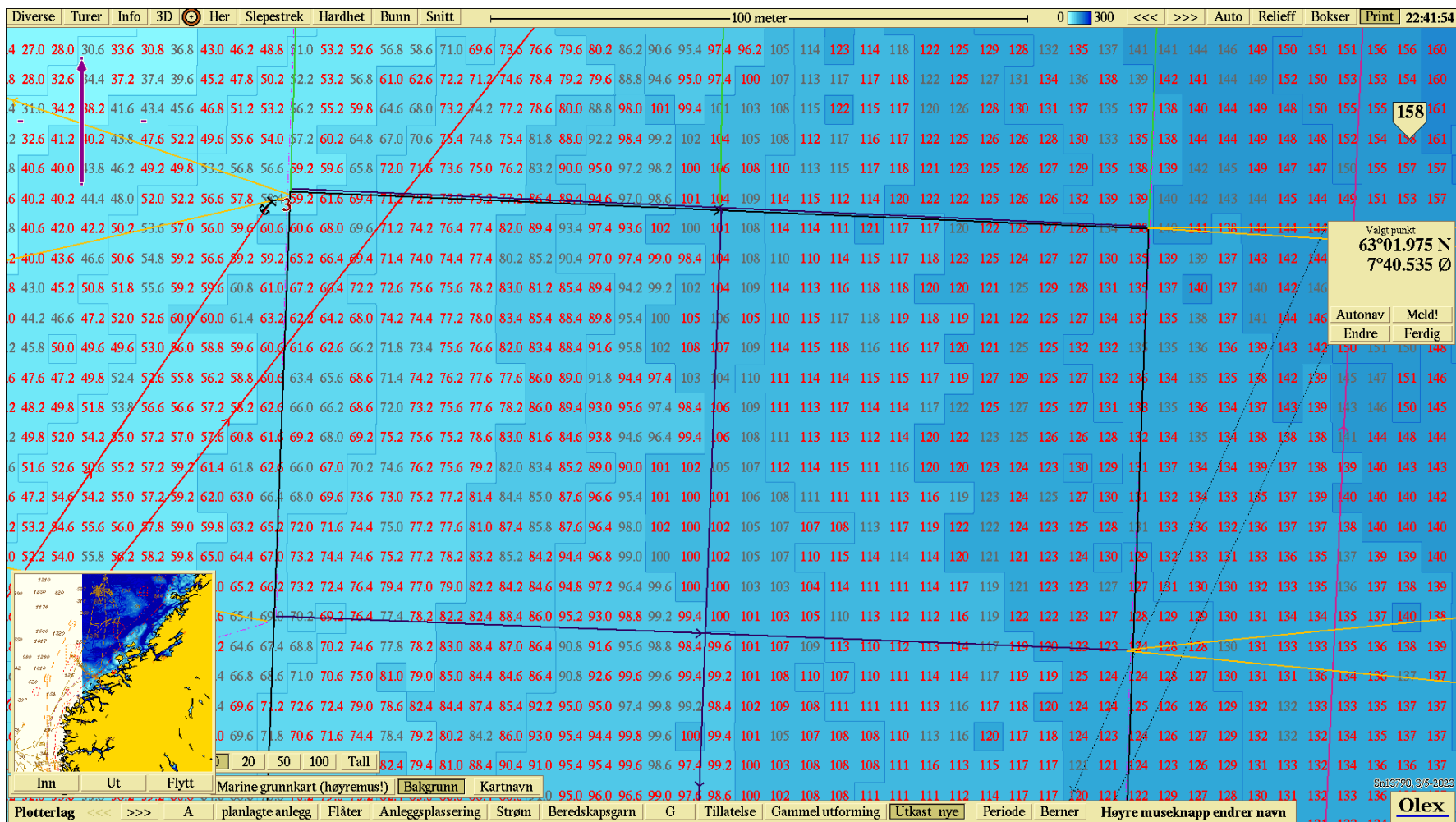
Kartvalg Norgeskart 14/7-2019 Marine grunnkart (høyremus!) ChartWorld Bakgrunn Kartnavn CD-oversikt ChartWorld-versjoner

Plotterlag <<< >>> Anleggsramme Fortøyninger Forflåte Kladd Utkast F G H I J Periode Berner Høyre museknapp endrer navn

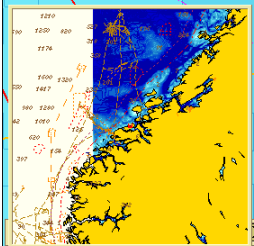
CPU 53°C  
Sn10864,11/4-2023



# Dybde under anlegg

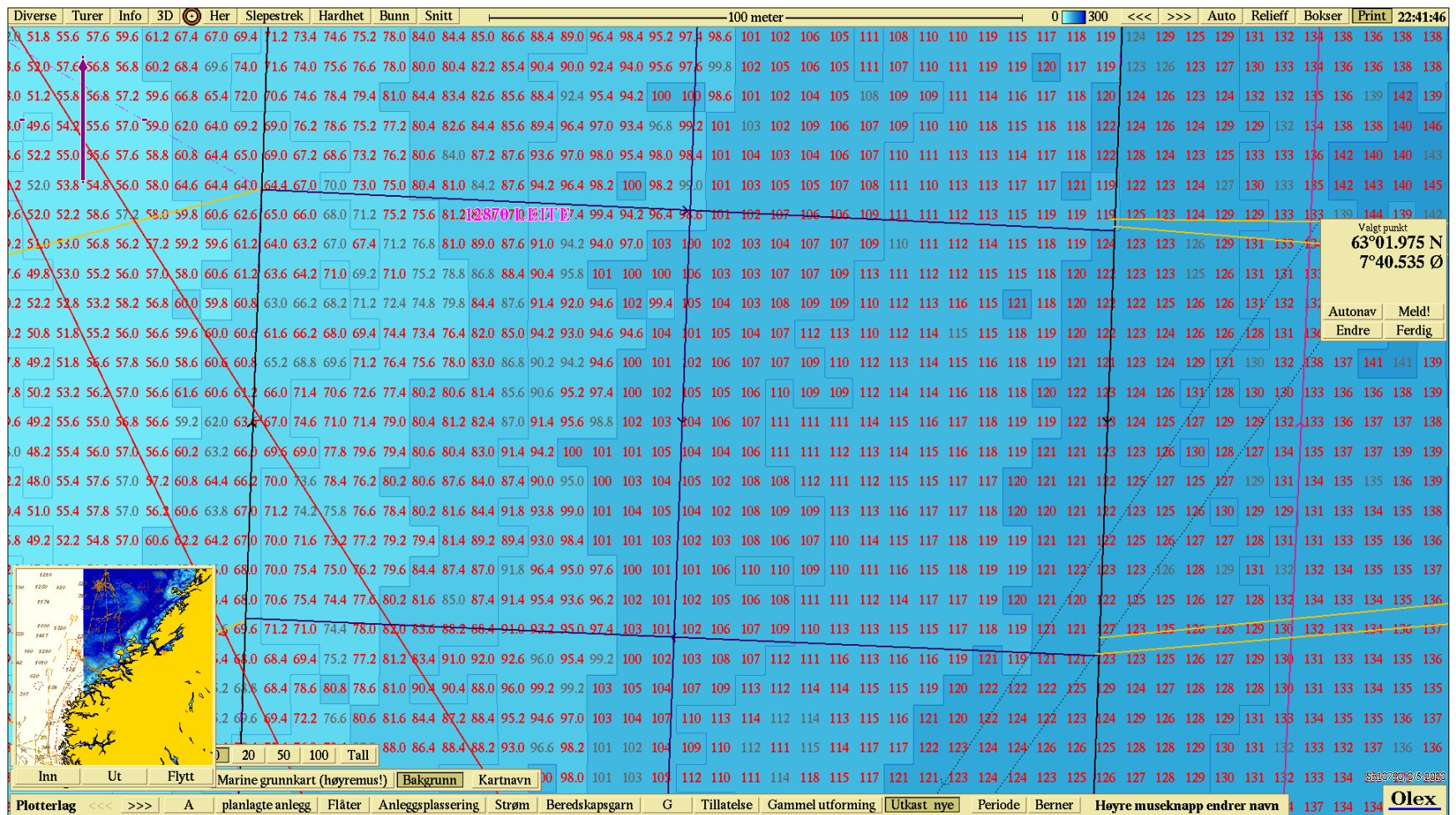


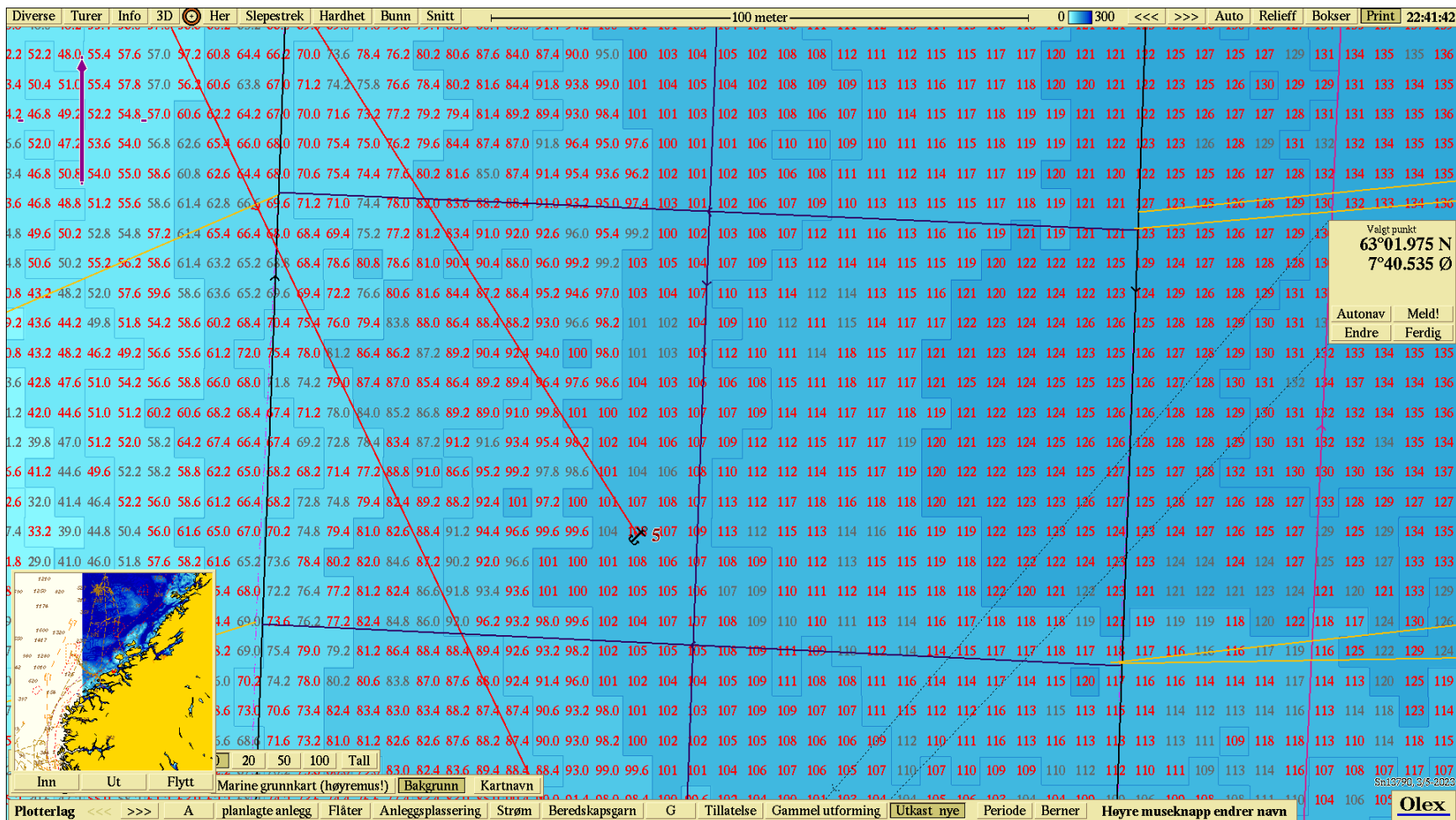
Diverse	Turer	Info	3D	Her	Slepestrek	Hardhet	Bunn	Snitt	100 meter										0	300	<<<	>>>	Auto	Relieff	Bokser	Print	22:41:50																					
51.6	52.6	50.6	55.2	57.2	59.2	61.4	61.8	62.6	66.0	67.0	70.2	74.6	76.2	75.6	79.2	82.0	83.4	85.2	89.0	90.0	101	102	105	107	112	114	115	111	116	120	120	123	124	123	130	129	131	137	134	134	139	137	138	139	140	143	143	14
47.2	54.6	55.2	55.0	57.2	59.2	62.0	63.0	66.4	68.0	69.6	73.6	73.0	75.2	77.2	81.4	84.4	85.0	87.6	96.6	95.4	101	100	101	106	108	111	111	111	113	116	119	123	124	125	127	130	131	132	134	133	135	137	139	140	140	140	142	14
53.2	54.6	55.6	56.0	57.8	59.0	59.8	63.2	65.2	72.0	71.6	74.4	75.0	77.2	77.6	81.0	87.4	85.8	87.6	96.4	98.0	102	100	102	105	107	107	108	113	117	119	122	122	124	123	125	128	131	133	136	132	136	137	137	138	140	140	140	14
52.2	54.0	55.8	56.2	58.2	59.8	65.0	64.4	67.0	73.2	74.4	74.6	75.2	77.2	78.2	83.2	85.2	84.2	94.4	96.8	99.0	100	100	102	105	107	110	115	114	114	114	120	121	121	123	124	130	129	132	133	131	133	136	135	137	139	139	14	
52.6	55.0	55.6	55.8	58.6	59.8	63.0	65.2	66.2	73.2	72.4	76.4	79.4	77.0	79.0	82.2	84.2	84.6	94.8	97.2	96.4	99.6	100	100	103	103	104	114	111	111	114	117	119	121	123	123	127	127	131	130	130	132	133	135	136	137	138	139	14
53.8	55.0	56.6	58.8	59.8	59.8	63.6	65.4	69.0	70.2	69.2	76.4	77.4	78.2	82.2	82.4	88.4	86.0	95.2	93.0	98.8	99.2	99.4	100	101	103	105	110	113	112	112	116	119	122	122	123	127	128	129	129	130	131	134	134	135	137	140	138	14
52.2	53.2	55.0	59.6	58.0	60.0	62.2	64.6	67.4	68.8	70.2	74.6	77.8	78.2	83.0	88.4	87.0	86.4	90.8	91.6	95.6	98.8	98.4	99.6	101	107	109	113	110	112	113	114	117	119	120	123	123	124	125	128	130	131	133	133	134	136	136	137	13
54.0	54.0	55.0	59.6	58.6	60.6	64.4	66.8	68.6	71.0	70.6	75.0	81.0	79.0	85.0	84.4	84.6	86.4	90.8	92.6	99.6	99.6	99.4	99.2	101	108	110	107	110	111	114	114	117	119	119	125	124	124	128	127	130	131	131	136	136	136	137	13	
55.2	56.6	54.0	59.6	59.2	61.2	65.4	69.6	71.2	72.6	72.4	79.0	78.6	82.4	84.4	87.4	85.4	92.2	95.0	95.0	97.4	99.8	99.2	98.4	102	109	108	111	111	111	113	116	117	118	120	124	124	125	126	126	129	132	132	133	133	133	133	133	13
51.8	53.2	57.6	60.6	62.6	65.4	67.0	69.6	71.8	70.6	71.6	74.4	78.4	79.2	80.2	84.2	86.0	93.0	95.4	94.4	99.8	99.6	100	99.4	101	105	107	108	108	110	113	116	120	117	118	124	123	124	126	127	129	132	132	132	132	132	132	132	13
54.0	57.6	58.2	59.8	60.6	61.2	65.4	69.2	73.2	70.6	74.8	74.6	82.4	79.4	81.0	88.4	90.4	91.0	95.4	95.4	99.6	98.6	97.4	99.2	100	103	108	108	108	111	116	113	115	117	117	121	121	124	123	126	129	131	133	132	134	136	136	137	13
52.0	53.6	55.8	58.2	59.2	60.8	64.6	68.6	70.8	70.2	79.0	75.2	82.4	85.0	86.0	88.4	88.0	91.0	95.0	96.0	96.6	99.0	97.4	98.6	100	102	108	108	111	111	111	112	114	117	117	120	121	122	129	127	128	130	131	132	133	136	135	137	13
53.6	53.2	58.0	59.6	60.6	61.2	64.2	69.4	73.2	70.4	75.6	77.2	79.4	86.0	84.6	83.0	85.2	93.0	95.4	97.6	98.8	101	97.2	98.2	100	105	105	109	109	109	110	111	113	115	116	120	121	121	124	126	131	128	130	131	133	134	136	137	14
52.2	56.2	57.6	58.0	61.2	65.4	67.4	70.6	70.6	71.2	77.0	77.2	79.0	85.0	84.4	84.2	85.4	93.2	94.4	96.8	99.4	100	95.6	97.6	99.6	104	107	107	108	108	109	113	113	117	119	120	120	124	129	126	127	130	131	133	138	136	137	137	13
51.8	55.6	57.6	59.6	61.2	67.4	67.0	69.4	71.2	73.4	74.6	75.2	78.0	84.0	84.4	85.0	86.6	88.4	89.0	96.4	98.4	95.2	97.4	98.6	101	102	106	105	111	108	110	110	119	115	117	118	119	124	129	125	129	131	132	134	138	136	138	138	14
52.0	57.6	56.8	56.8	60.2	68.4	69.6	74.0	71.6	74.0	75.6	76.6	78.0	80.0	80.4	82.2	85.4	90.4	90.0	92.4	94.0	95.6	97.6	99.8	102	105	106	105	111	107	110	111	119	119	120	117	119	123	126	123	127	130	133	134	136	136	138	138	13
51.2	55.8	56.8	57.2	59.6	66.8	65.4	72.0	70.6	74.6	78.4	79.4	81.0	84.4	83.4	82.6	85.6	88.4	92.4	95.4	94.2	100	100	98.6	101	102	104	105	108	109	109	111	114	116	117	118	120	124	126	123	124	132	132	135	136	139	142	139	14
49.6	54.2	55.6	57.0	59.0	62.0	64.0	69.2	69.0	76.2	78.6	75.2	77.2	80.4	82.6	84.4	85.6	89.4	96.4	97.0	93.4	96.8	99.2	101	103	102	109	106	107	109	110	110	118	115	118	118	122	124	126	124	129	129	132	134	138	138	140	146	14
65.0	69.0	67.2	68.6	73.2	76.2	80.6	84.0	87.2	87.6	93.6	97.0	98.0	95.4	98.0	98.4	101	104	103	104	106	107	110	111	113	113	114	117	118	118	122	126	124	123	125	133	133	136	142	140	140	143	143	143	143	14			
64.0	64.4	67.0	70.0	73.0	75.0	80.4	81.0	84.2	87.6	94.2	96.4	98.2	100	98.2	99.0	101	103	105	105	107	108	111	110	113	113	117	117	121	119	122	123	124	127	130	133	135	142	143	140	145	145	145	145	145	145	14		
62.6	65.0	66.0	68.0	71.2	75.2	75.6	81.2	85.7	87.0	91.4	94.2	96.4	98.6	101	102	107	106	106	109	111	111	112	113	115	119	119	125	123	124	129	129	133	133	139	144	139	142	142	142	142	142	142	142	14				
61.2	64.0	63.2	67.0	67.4	71.2	76.8	81.0	89.0	87.6	91.0	94.2	94.0	97.0	103	100	102	103	104	107	107	109	110	111	112	114	115	118	119	124	123	123	126	129	131	135	134	137	139	140	143	143	143	143	143	143	14		
61.2	63.6	64.2	71.0	69.2	71.0	75.2	78.8	86.8	88.4	90.4	95.8	101	100	100	106	103	107	107	109	113	111	112	112	115	115	118	120	122	123	123	125	126	131	131	133	141	143	145	139	141	143	145	139	141	143	14		
60.8	63.0	66.2	68.2	71.2	72.4	74.8	79.8	84.4	87.6	91.4	92.0	94.6	102	99.4	105	104	103	108	109	109	110	112	113	116	115	121	118	120	122	122	125	126	126	131	132	132	141	142	144	143	143	143	143	143	143	14		
94.2	94.6	100	101	102	106	107	107	109	110	112	113	114	115	116	118	119	121	121	123	124	129	131	130	132	138	137	141	137	141	141	141	141	141	141	141	141	141	141	141	141	141	141	141	141	141	141		



Valgt punkt  
63°01.975 N  
7°40.535 Ø

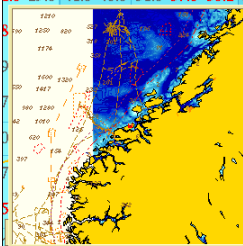
Autonav	Meld!
Endre	Ferdig





Valgt punkt  
63°01.975 N  
7°40.535 Ø

Autonav	Meld!
Endre	Ferdig



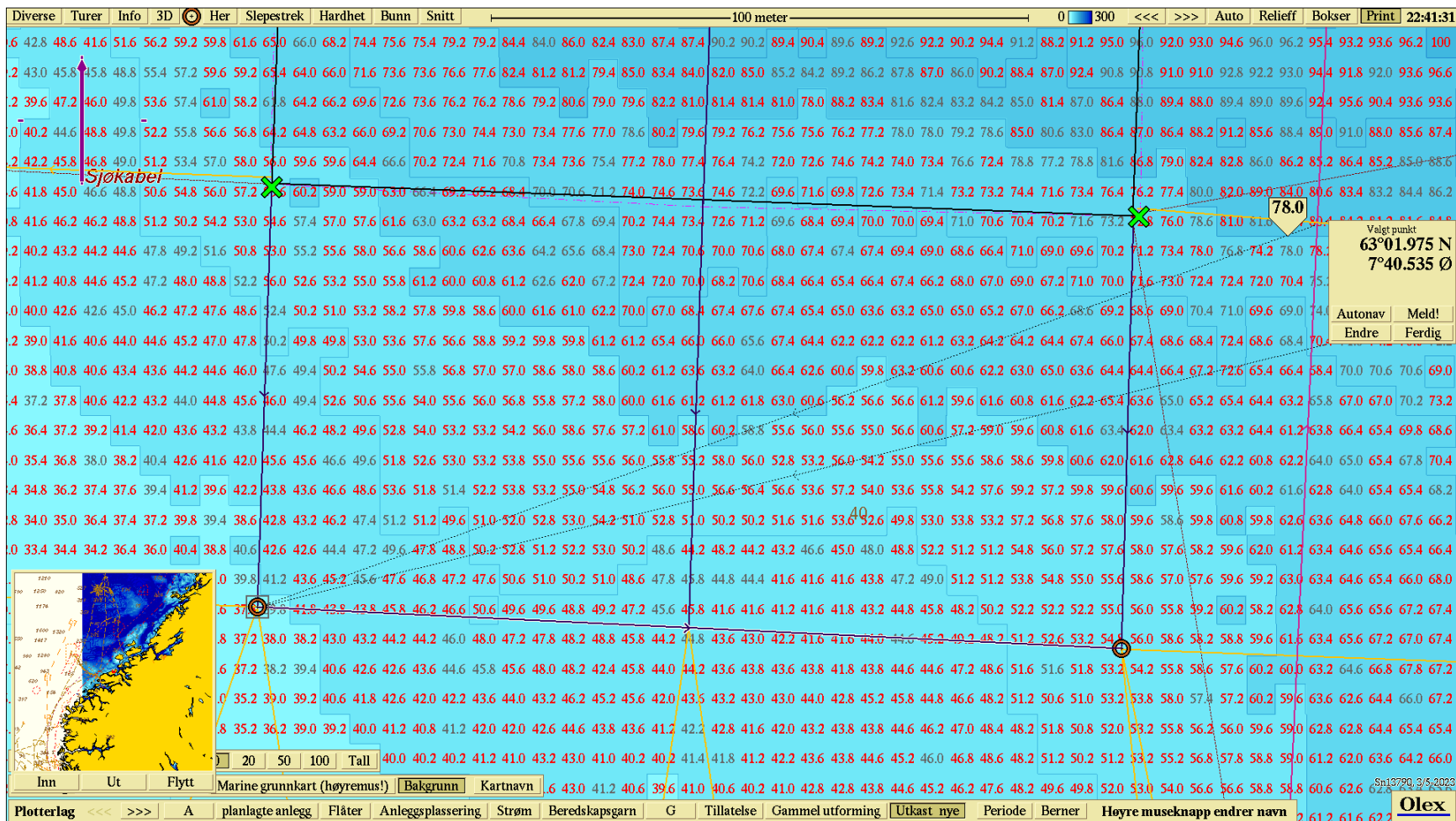
Inn Ut Flytt

Marine grunnkart (høyremus!) Bakgrunn Kartnavn  
planlagte anlegg Flåter Anleggsplassing Strøm Beredskapsgarn G Tillatelse Gammel utforming Utkast nye Periode Berner Høyre museknapp endrer navn

Olex



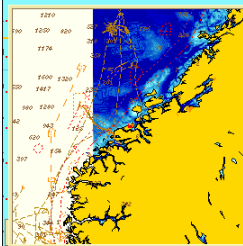




Valgt punkt  
 63°01.975 N  
 7°40.535 Ø

Autonav	Meld!
Endre	Ferdig

78.0



Inn Ut Flytt  
 Marine grunnkart (høyremus!) Bakgrunn Kartnavn 16 43.0 41.2 40.6 39.6 41.0 40.6 40.2 41.0 42.8 42.8 43.8 44.6 45.2 46.2 47.6 48.2 49.6 49.8 52.0 53.0 54.0 56.6 56.6 58.8 59.0 61.2 62.0 63.6 64.2 66.0  
 Plotterlag <<< >>> A planlagte anlegg Flåter Anleggsplassering Strøm Beredskapsgarn G Tillatelse Gammel utforming Utkast nye Periode Bernar Høyre museknapp endrer navn 2 61.2 61.6 62.2

Sp13790 3/5/2023  
 Olex